



IMPERIAL

\*\*\* LIFESTYLE \*\*\*

*Where your family is our family!*

Your  
**ETERNALLY**  
exclusive Lifestyle!



IMPERIAL  
\* \*  
**PARAMOUNT**



# A MASTERPIECE OF LUXURIOUS LIFESTYLE!

A masterpiece of design and planning, Imperial Paramount and Imperial Altamount are elegant, majestic and a marvelous creation crafted to perfection. Radiating its splendour for extensiveness, our homes are a masterpiece of grandness. An epitome of exquisite beauty Imperial Paramount and Imperial Altamount are truly a joy forever. This creation of pristine flamboyance invites the connoisseurs of beautiful living to live a reality that's more beautiful than the most beautiful dream.



G+17  
STOREY



★ I M P E R I A L ★  
PARAMOUNT



## PROJECT HIGHLIGHTS



**GAZEBO**



**KIDS PLAY AREA**



**INDOOR GAMES**



**SR. CITIZEN LAWN**



**SECURITY FEATURES**



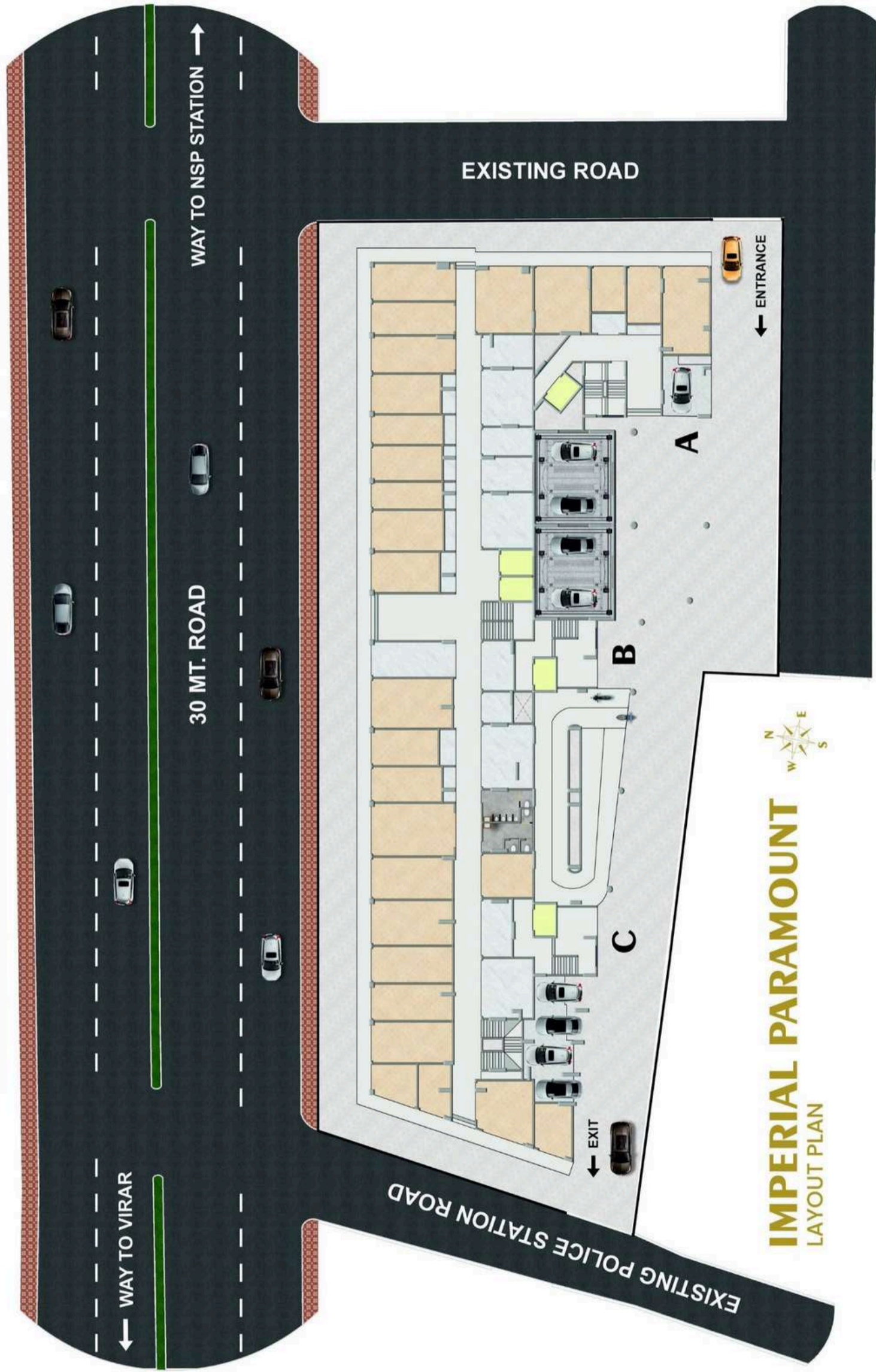
**PODIUM GARDEN**



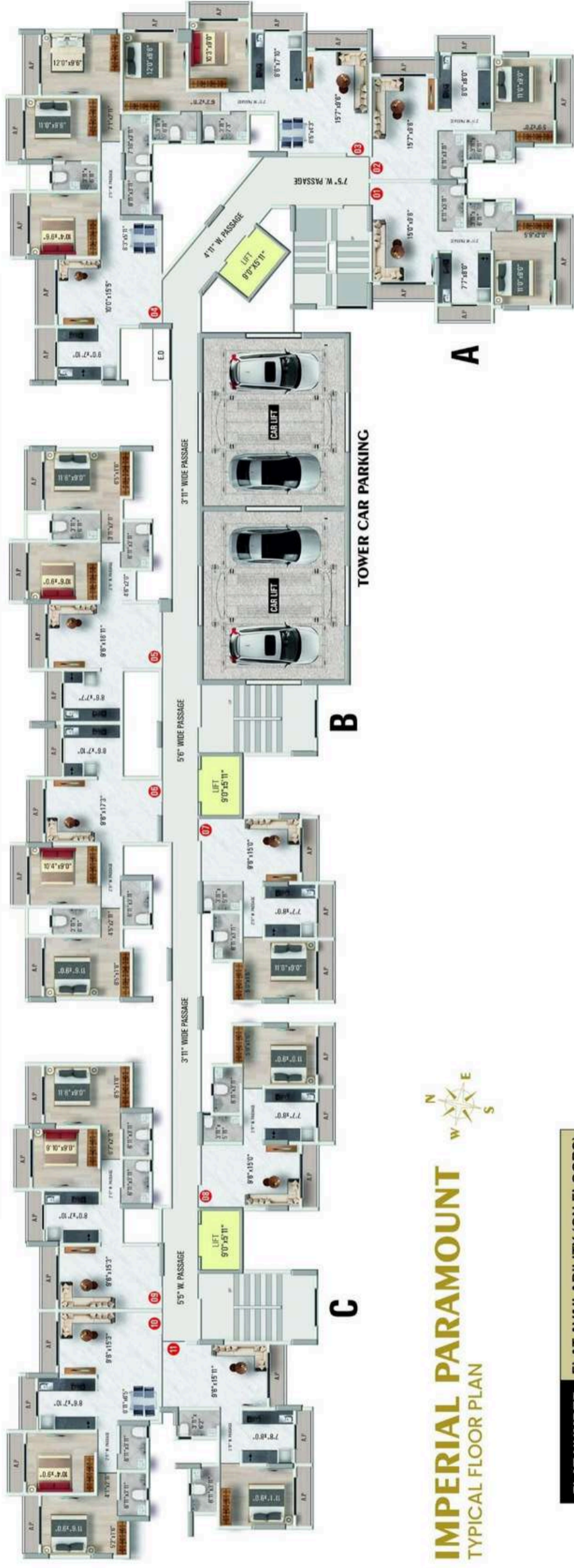
**BADMINTON COURT**



# LAYOUT



# TYPICAL FLOOR



## IMPERIAL PARAMOUNT TYPICAL FLOOR PLAN

| FLAT NUMBER         | FLAT AVAILABILITY (ON FLOORS) |
|---------------------|-------------------------------|
| 01                  | 09, 10, 11, 12, 13, 15, 16    |
| 02                  | 09, 10, 11, 12, 13, 15, 16    |
| 03                  | 10, 11, 12, 13, 15, 16        |
| 04                  | 08, 10, 11, 12, 13, 15, 16    |
| 05                  | 08, 09, 10, 11, 13, 15, 16    |
| 06                  | 08, 09, 10, 11, 13, 15, 16    |
| 07                  | 15, 16                        |
| 08                  | 15, 16                        |
| 09                  | 11, 12, 13, 15, 16            |
| 10                  | 10, 12, 13, 15                |
| 11                  | 04 - 13, 15, 16               |
| <b>REFUGE FLATS</b> | <b>610, 1110 &amp; 1610</b>   |

| 1BHK | 01         |
|------|------------|
| R.A  | 38.97 sq.m |
| U.A  | 475 sq.ft  |

| 1BHK | 02         |
|------|------------|
| R.A  | 39.80 sq.m |
| U.A  | 485 sq.ft  |

| 2BHK | 03         |
|------|------------|
| R.A  | 54.68 sq.m |
| U.A  | 655 sq.ft  |

| 3BHK | 04         |
|------|------------|
| R.A  | 72.60 sq.m |
| U.A  | 870 sq.ft  |

| 2BHK | 05         |
|------|------------|
| R.A  | 52.87 sq.m |
| U.A  | 635 sq.ft  |

| 2BHK | 06         |
|------|------------|
| R.A  | 52.05 sq.m |
| U.A  | 625 sq.ft  |

| 1BHK | 07         |
|------|------------|
| R.A  | 38.30 sq.m |
| U.A  | 460 sq.ft  |

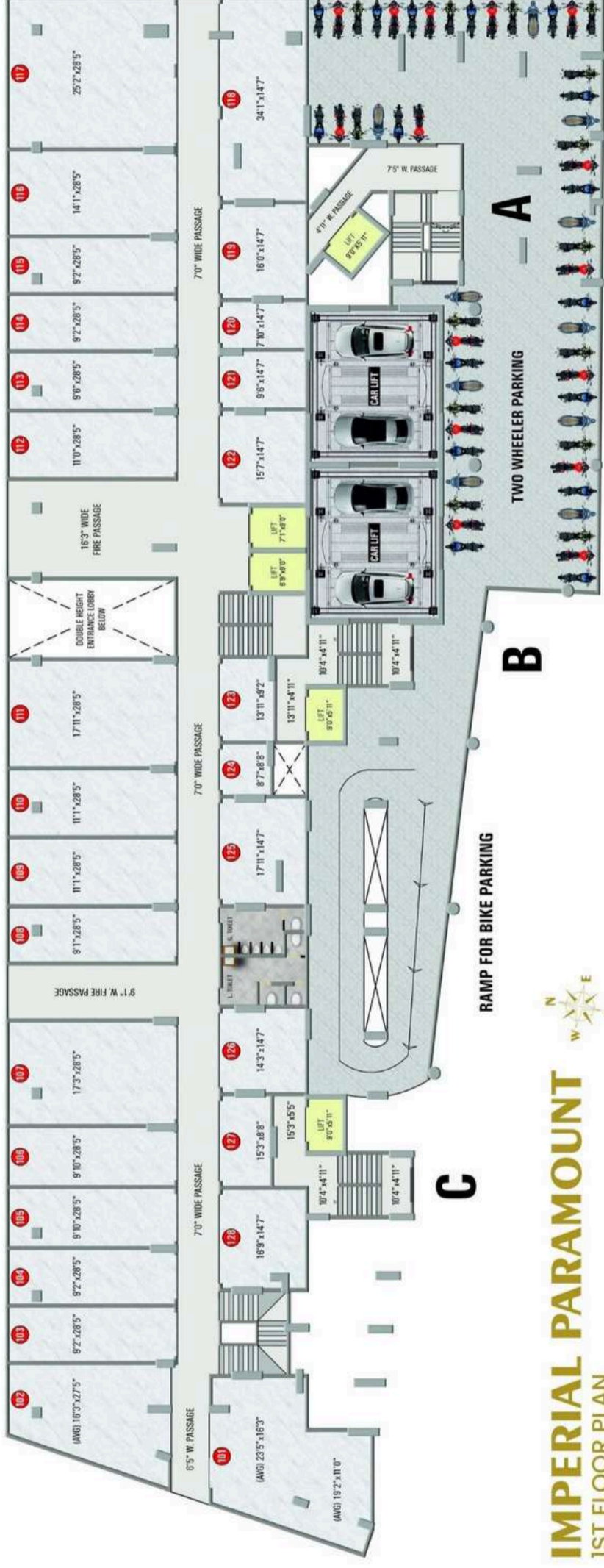
| 1BHK | 08         |
|------|------------|
| R.A  | 38.30 sq.m |
| U.A  | 460 sq.ft  |

| 2BHK | 09         |
|------|------------|
| R.A  | 51.09 sq.m |
| U.A  | 615 sq.ft  |

| 2BHK | 10         |
|------|------------|
| R.A  | 55.89 sq.m |
| U.A  | 665 sq.ft  |

| 1BHK | 11         |
|------|------------|
| R.A  | 38.24 sq.m |
| U.A  | 465 sq.ft  |

# FIRST FLOOR



## IMPERIAL PARAMOUNT 1ST FLOOR PLAN

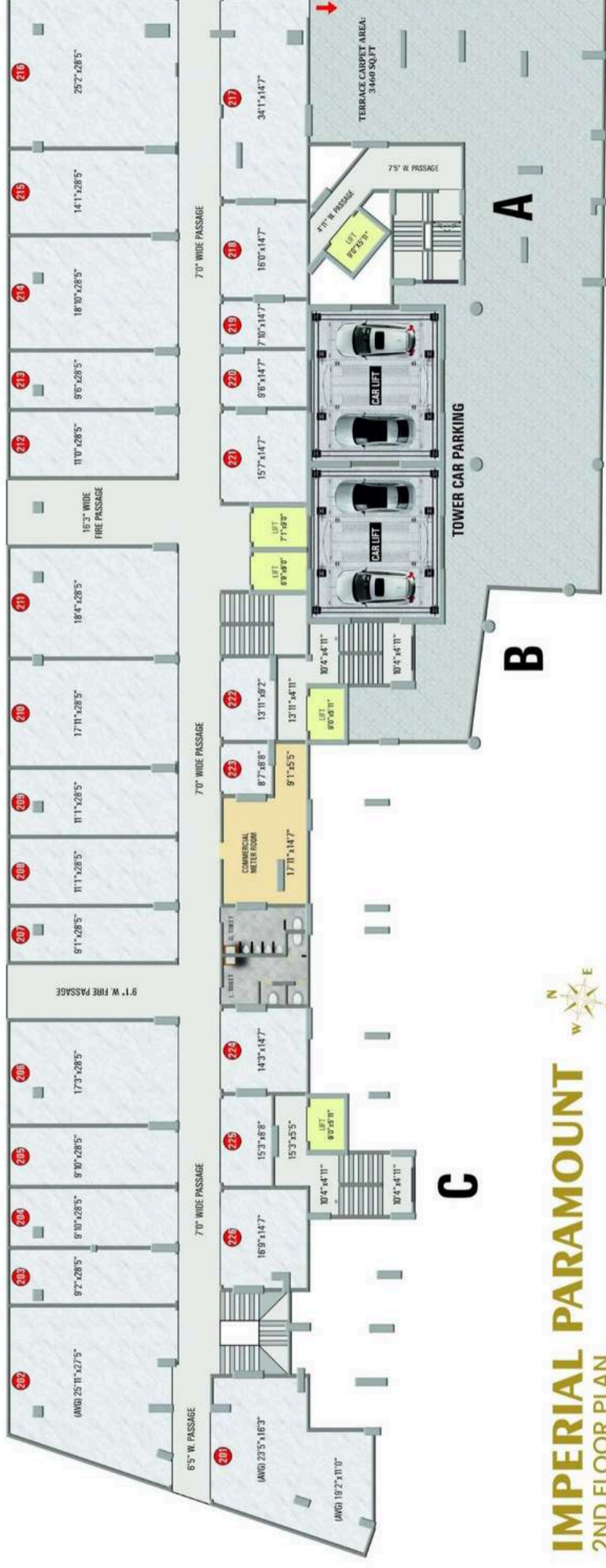


| SHOP | 101        | 102        | 103, 104   | 105, 106   | 107        | 108       | 109, 110   | 111        |
|------|------------|------------|------------|------------|------------|-----------|------------|------------|
| R.A. | 54.50 sq.m | 41.20 sq.m | 24.16 sq.m | 25.77 sq.m | 45.47 sq.m | 24 sq.m   | 29.28 sq.m | 47.12 sq.m |
| U.A. | 587 sq.ft  | 443 sq.ft  | 260 sq.ft  | 277 sq.ft  | 490 sq.ft  | 258 sq.ft | 315 sq.ft  | 507 sq.ft  |
| S.A. | 1175 sq.ft | 885 sq.ft  | 520 sq.ft  | 555 sq.ft  | 980 sq.ft  | 515 sq.ft | 630 sq.ft  | 1015 sq.ft |

| SHOP | 112        | 113        | 114, 115   | 116        | 117        | 118        | 119        | 120        |
|------|------------|------------|------------|------------|------------|------------|------------|------------|
| R.A. | 28.93 sq.m | 25.04 sq.m | 24.24 sq.m | 37.16 sq.m | 66.28 sq.m | 46.03 sq.m | 21.58 sq.m | 10.60 sq.m |
| U.A. | 311 sq.ft  | 270 sq.ft  | 261 sq.ft  | 400 sq.ft  | 713 sq.ft  | 495 sq.ft  | 232 sq.ft  | 114 sq.ft  |
| S.A. | 625 sq.ft  | 540 sq.ft  | 525 sq.ft  | 800 sq.ft  | 1425 sq.ft | 990 sq.ft  | 465 sq.ft  | 230 sq.ft  |

| SHOP | 121        | 122        | 123        | 124       | 125        | 126        | 127        | 128        |
|------|------------|------------|------------|-----------|------------|------------|------------|------------|
| U.A. | 12.83 sq.m | 21.06 sq.m | 11.80 sq.m | 6.88 sq.m | 24.26 sq.m | 19.27 sq.m | 12.23 sq.m | 22.60 sq.m |
| U.A. | 138 sq.ft  | 227 sq.ft  | 127 sq.ft  | 74 sq.ft  | 261 sq.ft  | 207 sq.ft  | 132 sq.ft  | 243 sq.ft  |
| S.A. | 275 sq.ft  | 455 sq.ft  | 255 sq.ft  | 150 sq.ft | 525 sq.ft  | 415 sq.ft  | 265 sq.ft  | 485 sq.ft  |

# SECOND FLOOR



## IMPERIAL PARAMOUNT 2ND FLOOR PLAN

| SHOP | 201        | 202        | 203        | 204, 205   | 206        | 207       | 208, 209   | 210        |
|------|------------|------------|------------|------------|------------|-----------|------------|------------|
| R.A  | 54.50 sq.m | 66.81 sq.m | 24.16 sq.m | 25.77 sq.m | 45.47 sq.m | 24 sq.m   | 29.28 sq.m | 47.12 sq.m |
| U.A  | 587 sq.ft  | 719 sq.ft  | 260 sq.ft  | 277 sq.ft  | 490 sq.ft  | 258 sq.ft | 315 sq.ft  | 507 sq.ft  |
| S.A  | 1175 sq.ft | 1440 sq.ft | 520 sq.ft  | 555 sq.ft  | 980 sq.ft  | 515 sq.ft | 630 sq.ft  | 1015 sq.ft |

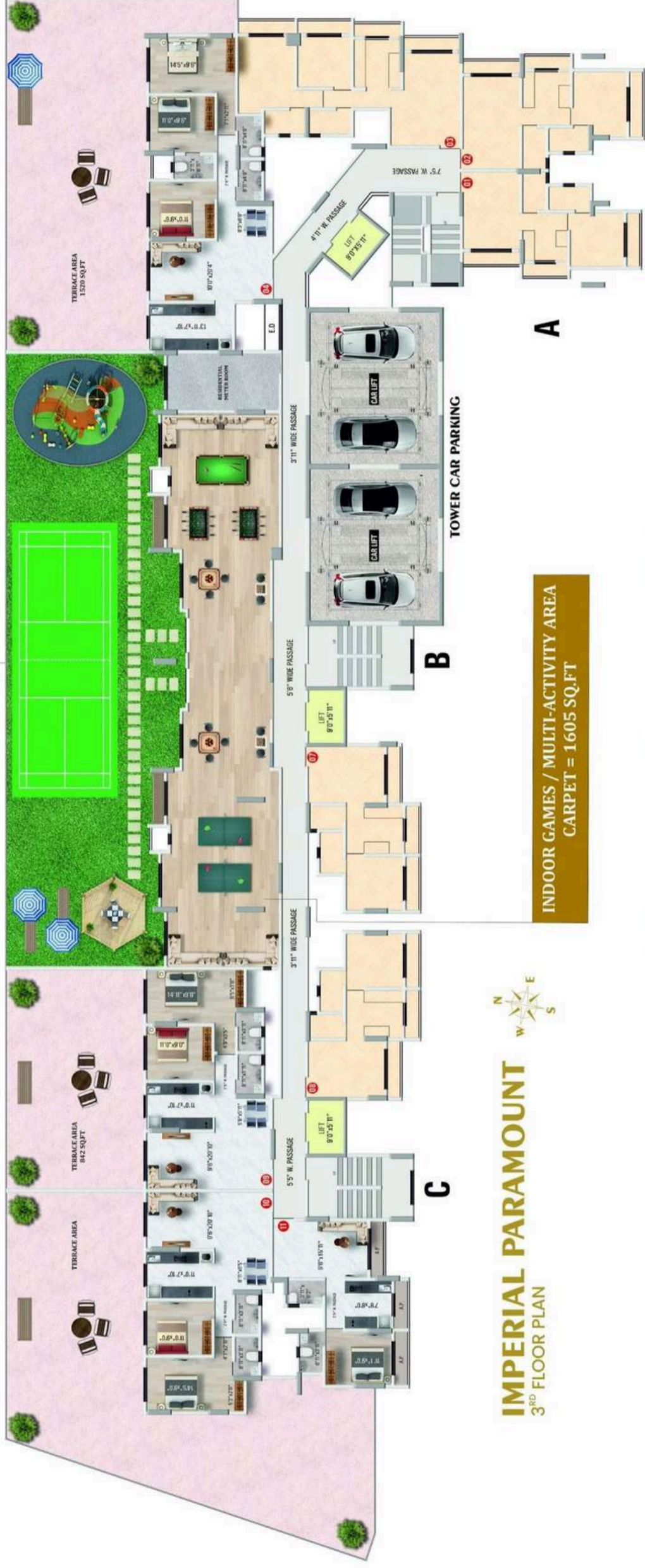
| SHOP | 211        | 212        | 213        | 214        | 215        | 216        | 217        | 218        |
|------|------------|------------|------------|------------|------------|------------|------------|------------|
| R.A  | 48.42 sq.m | 28.93 sq.m | 25.04 sq.m | 49.74 sq.m | 37.16 sq.m | 66.28 sq.m | 46.03 sq.m | 21.58 sq.m |
| U.A  | 521 sq.ft  | 311 sq.ft  | 270 sq.ft  | 533 sq.ft  | 400 sq.ft  | 713 sq.ft  | 495 sq.ft  | 232 sq.ft  |
| S.A  | 1045 sq.ft | 625 sq.ft  | 540 sq.ft  | 1065 sq.ft | 800 sq.ft  | 1425 sq.ft | 990 sq.ft  | 465 sq.ft  |

| SHOP | 219        | 220        | 221        | 222        | 223       | 224        | 225        | 226        |
|------|------------|------------|------------|------------|-----------|------------|------------|------------|
| R.A  | 10.60 sq.m | 12.83 sq.m | 21.06 sq.m | 11.80 sq.m | 6.88 sq.m | 19.27 sq.m | 12.23 sq.m | 22.60 sq.m |
| U.A  | 114 sq.ft  | 138 sq.ft  | 227 sq.ft  | 127 sq.ft  | 74 sq.ft  | 207 sq.ft  | 132 sq.ft  | 243 sq.ft  |
| S.A  | 230 sq.ft  | 275 sq.ft  | 455 sq.ft  | 255 sq.ft  | 150 sq.ft | 415 sq.ft  | 265 sq.ft  | 485 sq.ft  |

# THIRD FLOOR

GARDEN AREA = 3560 SQ.FT



INDOOR GAMES / MULTI-ACTIVITY AREA  
CARPET = 1605 SQ.FT



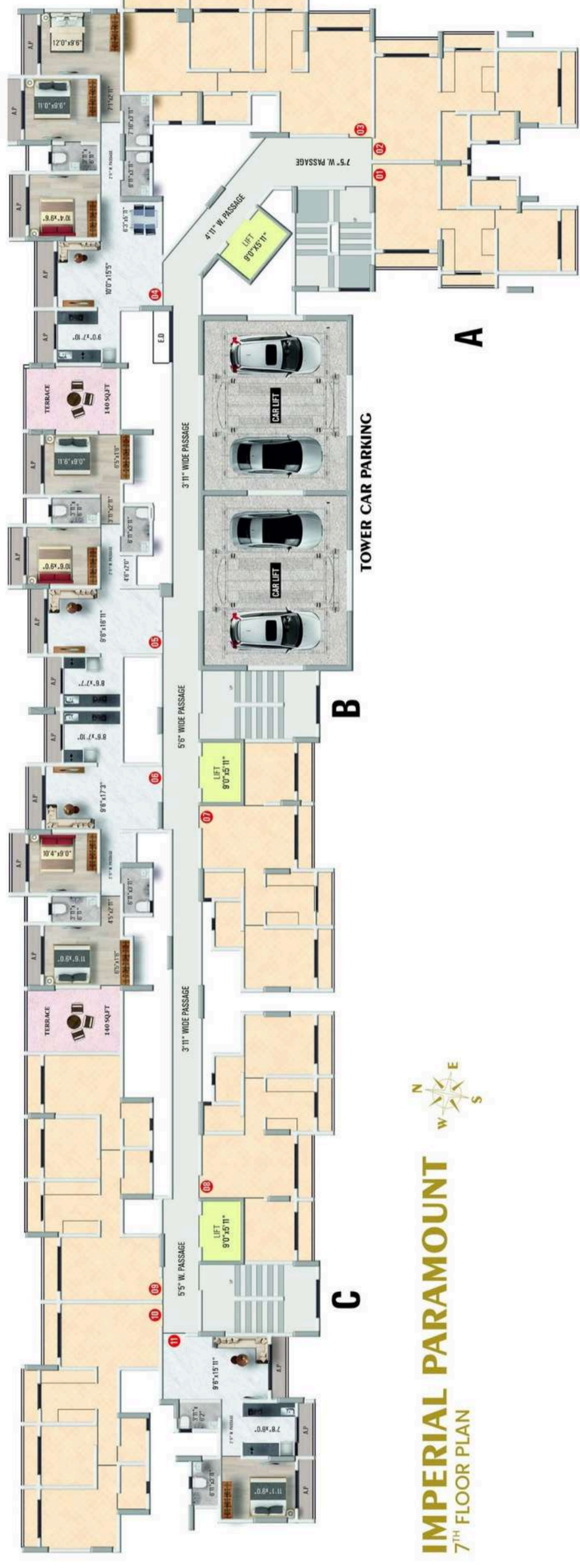
## IMPERIAL PARAMOUNT 3<sup>RD</sup> FLOOR PLAN

| 3BHK      |            | 04        |            |
|-----------|------------|-----------|------------|
| R.A       | 83.72 sq.m | R.A       | 66.73 sq.m |
| C.A (F)   | 860 sq.ft  | C.A (F)   | 687 sq.ft  |
| C.A (T)   | 1520 sq.ft | C.A (T)   | 842 sq.ft  |
| U.A (TOT) | 2380 sq.ft | U.A (TOT) | 1529 sq.ft |
| U.A (LDA) | 1620 sq.ft | U.A (LDA) | 1108 sq.ft |

| 2BHK      |            | 09        |            |
|-----------|------------|-----------|------------|
| R.A       | 66.73 sq.m | R.A       | 38.24 sq.m |
| C.A (F)   | 687 sq.ft  | C.A (F)   | 465 sq.ft  |
| C.A (T)   | 842 sq.ft  | U.A (TOT) | 1529 sq.ft |
| U.A (TOT) | 1529 sq.ft | U.A (LDA) | 1108 sq.ft |

| 1BHK |            | 11  |            |
|------|------------|-----|------------|
| R.A  | 38.24 sq.m | R.A | 38.24 sq.m |
| U.A  | 465 sq.ft  | U.A | 465 sq.ft  |

# 7TH FLOOR



## IMPERIAL PARAMOUNT 7TH FLOOR PLAN

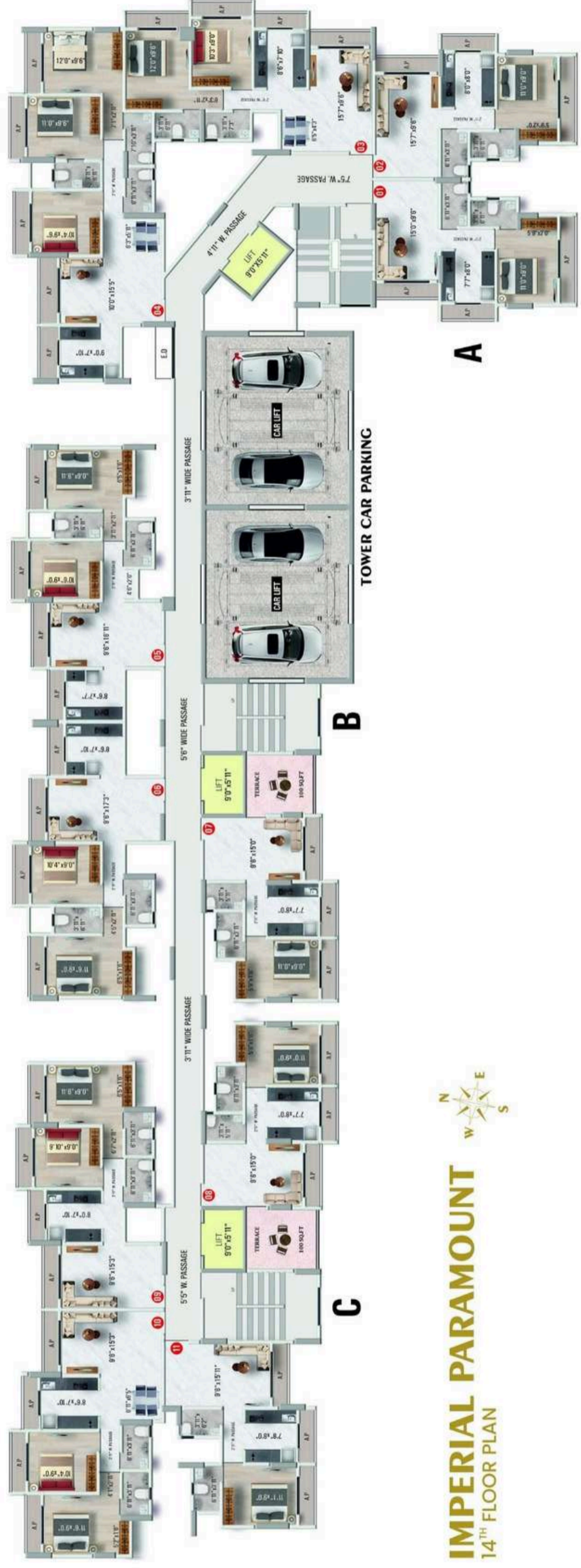
| 3BHK |            | 04  |           |
|------|------------|-----|-----------|
| R.A  | 72.20 sq.m | U.A | 870 sq.ft |
| U.A  |            |     |           |

| 2BHK      |            | 05        |           |
|-----------|------------|-----------|-----------|
| R.A       | 52.87 sq.m | C.A (F)   | 635 sq.ft |
| C.A (F)   | 635 sq.ft  | C.A (T)   | 140 sq.ft |
| C.A (T)   | 140 sq.ft  | U.A (TOT) | 775 sq.ft |
| U.A (TOT) | 775 sq.ft  | U.A (LDA) | 705 sq.ft |

| 2BHK      |            | 06        |           |
|-----------|------------|-----------|-----------|
| R.A       | 52.05 sq.m | C.A (F)   | 625 sq.ft |
| C.A (F)   | 625 sq.ft  | C.A (T)   | 140 sq.ft |
| C.A (T)   | 140 sq.ft  | U.A (TOT) | 765 sq.ft |
| U.A (TOT) | 765 sq.ft  | U.A (LDA) | 695 sq.ft |

| 1BHK |            | 11  |           |
|------|------------|-----|-----------|
| R.A  | 38.24 sq.m | U.A | 465 sq.ft |
| U.A  |            |     |           |

# 14TH FLOOR



## IMPERIAL PARAMOUNT 14<sup>TH</sup> FLOOR PLAN

|             |            |
|-------------|------------|
| <b>1BHK</b> | <b>01</b>  |
| R.A         | 38.97 sq.m |
| U.A         | 475 sq.ft  |

|             |            |
|-------------|------------|
| <b>1BHK</b> | <b>02</b>  |
| R.A         | 39.80 sq.m |
| U.A         | 485 sq.ft  |

|             |            |
|-------------|------------|
| <b>2BHK</b> | <b>03</b>  |
| R.A         | 54.68 sq.m |
| U.A         | 655 sq.ft  |

|             |            |
|-------------|------------|
| <b>3BHK</b> | <b>04</b>  |
| R.A         | 72.60 sq.m |
| U.A         | 870 sq.ft  |

|             |            |
|-------------|------------|
| <b>2BHK</b> | <b>05</b>  |
| R.A         | 52.87 sq.m |
| U.A         | 635 sq.ft  |

|             |            |
|-------------|------------|
| <b>2BHK</b> | <b>06</b>  |
| R.A         | 52.05 sq.m |
| U.A         | 625 sq.ft  |

|             |            |
|-------------|------------|
| <b>1BHK</b> | <b>07</b>  |
| R.A         | 38.30 sq.m |
| C.A (F)     | 460 sq.ft  |
| C.A (T)     | 100 sq.ft  |
| U.A (TOT)   | 560 sq.ft  |
| U.A (LDA)   | 510 sq.ft  |

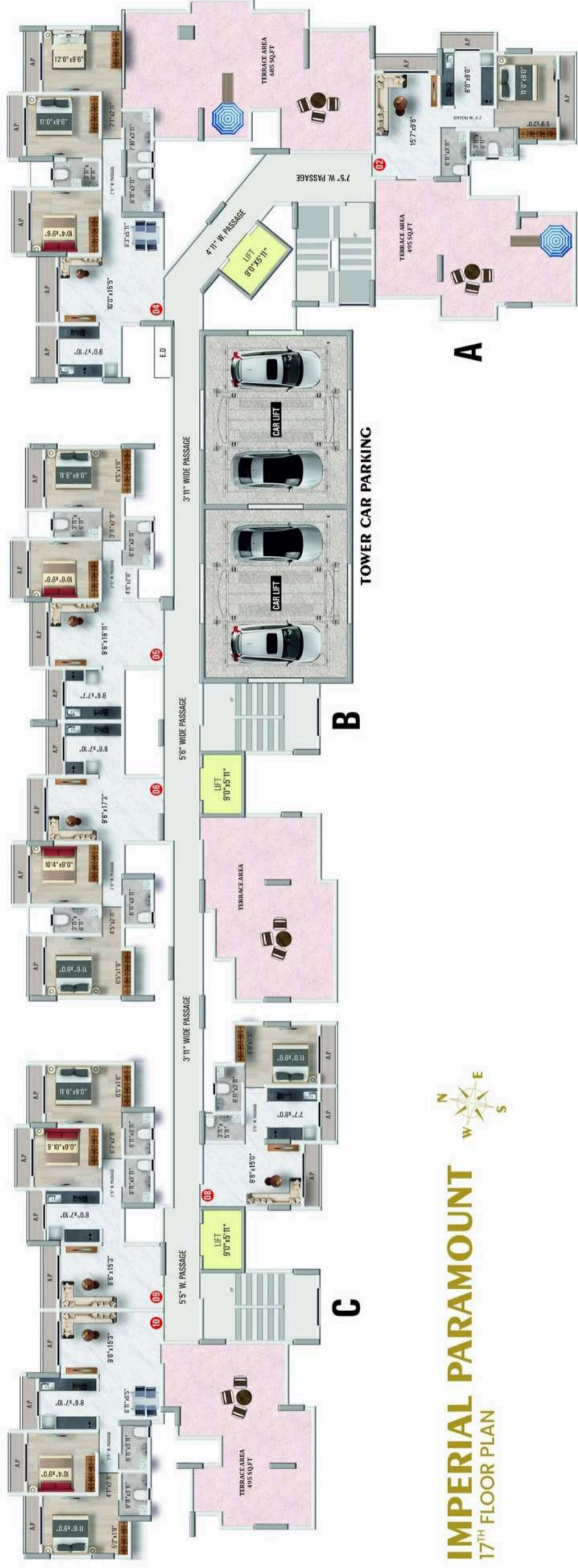
|             |            |
|-------------|------------|
| <b>1BHK</b> | <b>08</b>  |
| R.A         | 38.30 sq.m |
| C.A (F)     | 460 sq.ft  |
| C.A (T)     | 100 sq.ft  |
| U.A (TOT)   | 560 sq.ft  |
| U.A (LDA)   | 510 sq.ft  |

|             |            |
|-------------|------------|
| <b>2BHK</b> | <b>09</b>  |
| R.A         | 51.09 sq.m |
| U.A         | 615 sq.ft  |

|             |            |
|-------------|------------|
| <b>2BHK</b> | <b>10</b>  |
| R.A         | 55.89 sq.m |
| U.A         | 665 sq.ft  |

|             |            |
|-------------|------------|
| <b>1BHK</b> | <b>11</b>  |
| R.A         | 38.24 sq.m |
| U.A         | 465 sq.ft  |

# 17TH FLOOR



## IMPERIAL PARAMOUNT 17<sup>TH</sup> FLOOR PLAN

| 1BHK      |            | 02 |  |
|-----------|------------|----|--|
| R.A       | 39.80 sq.m |    |  |
| C.A (F)   | 485 sq.ft  |    |  |
| C.A (T)   | 495 sq.ft  |    |  |
| U.A (TOT) | 980 sq.ft  |    |  |
| U.A (LDA) | 733 sq.ft  |    |  |

| 3BHK      |            | 04 |  |
|-----------|------------|----|--|
| R.A       | 72.60 sq.m |    |  |
| C.A (F)   | 870 sq.ft  |    |  |
| C.A (T)   | 685 sq.ft  |    |  |
| U.A (TOT) | 1555 sq.ft |    |  |
| U.A (LDA) | 1213 sq.ft |    |  |

| 2BHK |            | 05 |  |
|------|------------|----|--|
| R.A  | 52.06 sq.m |    |  |
| U.A  | 625 sq.ft  |    |  |

| 2BHK |            | 06 |  |
|------|------------|----|--|
| R.A  | 52.06 sq.m |    |  |
| U.A  | 625 sq.ft  |    |  |

| 1BHK |            | 08 |  |
|------|------------|----|--|
| R.A  | 38.30 sq.m |    |  |
| U.A  | 460 sq.ft  |    |  |

| 2BHK |            | 09 |  |
|------|------------|----|--|
| R.A  | 51.09 sq.m |    |  |
| U.A  | 615 sq.ft  |    |  |

| 2BHK      |            | 10 |  |
|-----------|------------|----|--|
| R.A       | 55.89 sq.m |    |  |
| C.A (F)   | 665 sq.ft  |    |  |
| C.A (T)   | 495 sq.ft  |    |  |
| U.A (TOT) | 1160 sq.ft |    |  |
| U.A (LDA) | 913 sq.ft  |    |  |

committed to  
**convenient**  
LIFESTYLE!

Besides occupying a special place in your heart, our homes occupy a vantage location that is seamlessly connected. The present and the upcoming infrastructure facilities around assures of a lifestyle that's convenient to the core.

Here you are conveniently placed with all your social, religious, entertainment and daily needs being around the corner. You are a stone's throw away from school, college, market, malls, theatres, railway station etc. Living this up close to convenience makes your life smoother and better.



## SHOPPING

D-mart Ready  
(0.6km-2min)

Sahakari Bandar  
(1.1km-4min)

## CINEMAS

Fun Fiesta  
(1.1km-4min)

Sai Deep Cinema  
(6.6km-18min)

## BANKS

HDFC Bank  
(0.4km-2min)

Bank of India  
(0.55km-2min)

SBI  
(0.7km-3min)

## FUEL STATIONS

HP Petrol Pump  
(0.2km-1min)

Bharat Petroleum  
(0.35km-2min)

## BANQUET HALL

Gourmet Cuisine  
& Banquets  
(5.4km-15min)

## FASHION & RETAIL

Croma  
Zudio  
Reliance Trends  
D.I.Y STORE  
(500m-3min)

## RAILWAY STATIONS

Nsp East  
(2.6km-10min)

Nsp West  
(1.5km-5min)

## FOOD CHAINS

KFC  
McDonalds  
Burger King  
Haldiram's  
(100 m-2min)

## FITNESS

5+ GYMS  
(500m-3min)

## SCHOOLS

Ryan International  
(0.9km-4min)

Ikidz Preschool  
(0.75km-3min)

Narayana School  
(1.4km-5min)

Rahul International  
(1.5km-5min)

St. Francis School  
(1.5km-5min)

## HOSPITALS

Star Hospital  
(0.6m-3mins)

United Multi  
Speciality Hospital  
(0.7-3min)





# LIVING ROOM

- POP False Ceiling with extra electric junction
- Glazed Vitrified Flooring Tiles (Size: 1200mm x 600mm)
- Main Door & Safety Door with Lamination & Heavy Brass Fittings
- Safety Door with MS Powder Coated Grills
- Branded Plastic paint on internal wall
- Powder Coated Aluminium Sliding Window with Blue Sapphire Glass
- Branded Switch Boards
- Granite Window Sills
- Hollow space for A.C. outlet
- Anti-skid 300mm x 300mm Tiles in Flower Bed
- Fire Sprinklers

## ELECTRICAL POINTS

(Modular Switches with Concealed Wiring)

|                   |          |
|-------------------|----------|
| <b>Tubelight</b>  | <b>2</b> |
| <b>Fan</b>        | <b>2</b> |
| <b>Chandelier</b> | <b>1</b> |

|                        |          |
|------------------------|----------|
| <b>Television</b>      | <b>1</b> |
| <b>Air Conditioner</b> | <b>1</b> |
| <b>Balcony Light</b>   | <b>1</b> |

**NOTE:** Electrical Points only.  
No Electrical Appliances shall be provided.



# BED ROOM

- POP False Ceiling with light points Vitrified
- Wooden Finish Flooring Tiles (Size: 1200mm x 600mm)
- Bedroom Plastic paint on Internal Wall
- Powder Coated Aluminum Sliding Window with Blue Sapphire Glass
- Branded Switch Boards
- Granite Window Sills
- Hollow space for A.C. outlet
- Anti-skid 300mm x 300mm Tiles in Flower Bed
- Fire Sprinklers

## ELECTRICAL POINTS

(Modular Switches with Concealed Wiring)

|                      |          |
|----------------------|----------|
| <b>Tubelight</b>     | <b>1</b> |
| <b>Fan</b>           | <b>1</b> |
| <b>Balcony Light</b> | <b>1</b> |

|                        |          |
|------------------------|----------|
| <b>Television</b>      | <b>1</b> |
| <b>Air Conditioner</b> | <b>1</b> |

**NOTE:** Electrical Points only.  
No Electrical Appliances shall be provided.



KITCHEN

- Modular Kitchen Stainless Steel Trolley (Shutter, Basket & Hydraulic Glass Shutter Loft)
- Glazed Vitrified Flooring Tiles (Size: 1200mm x 600mm)
- Granite Platform with Stainless Steel Sink
- Branded Plastic point on Internal Wall
- Powder Coated Aluminum Sliding Window with Blue Sapphire Glass
- Branded Switch Boards
- Granite Window Sills
- Anti-skid 300mm x 300mm Tiles in Flower Bed
- Fire Sprinklers

### ELECTRICAL POINTS

(Modular Switches with Concealed Wiring)

|                     |          |
|---------------------|----------|
| <b>Refrigerator</b> | <b>1</b> |
| <b>Mixer</b>        | <b>1</b> |
| <b>Fan</b>          | <b>1</b> |

|                        |          |
|------------------------|----------|
| <b>Tube-light</b>      | <b>1</b> |
| <b>Washing Machine</b> | <b>1</b> |
| <b>Exhaust Fan</b>     | <b>1</b> |

|                            |          |
|----------------------------|----------|
| <b>Aquaguard Sink</b>      | <b>1</b> |
| <b>Tap Washing Machine</b> | <b>1</b> |
| <b>Machine</b>             | <b>1</b> |

**NOTE:** Electrical Points only.  
No Electrical Appliances shall be provided.



# BATHROOM

- Concealed Plumbing Fitting Granite Door
- Frame Wooden Door with Laminate
- Granite Window Skills with Louvers
- Branded Sanitaryware & Plumbing Fittings
- Overhead Water Tank in Bathroom Loft
- Inverter Point in Bathroom Loft Glazed
- Vitrified Wall Tiles (Size: 1200mm x 600mm)
- Anti-skid 300mm x 300mm Flooring Tiles
- Rain Water Harvesting Flush System

## ELECTRICAL POINTS

(Modular Switches with Concealed Wiring)

|                    |          |
|--------------------|----------|
| <b>Exhaust Fan</b> | <b>1</b> |
| <b>Tubelight</b>   | <b>1</b> |

## PLUMBING POINTS:

|                |          |
|----------------|----------|
| <b>Mixer</b>   | <b>1</b> |
| <b>Geysers</b> | <b>1</b> |

**NOTE:** Electrical Points only.  
No Electrical Appliances shall be provided.



I  
n  
n  
o  
v  
a  
t  
i  
o  
n

M  
a  
g  
n  
i  
f  
i  
c  
e  
n  
c  
e

P  
e  
r  
s  
e  
v  
e  
r  
a  
n  
c  
e

E  
x  
u  
b  
e  
r  
a  
n  
c  
e

R  
e  
l  
i  
a  
n  
c  
e

I  
n  
d  
e  
p  
e  
n  
d  
e  
n  
c  
e

A  
u  
t  
h  
e  
n  
t  
i  
c  
a  
t  
i  
o  
n

L  
u  
x  
u  
r  
i  
a  
n  
c  
e

# INTEGRITY. PASSION. PRIDE...

Establishes 1999 by the name of Shree Ganesh Builders, IMPERIAL LIFESTYLE was launched, in 2010, with a vision of providing state of the art amenities to their consumers. After ruling in the low budget and moderate sector for more than a decade, stepping into the next level was a prerequisite. With a rise in the standard of living, there came a demand for quality in construction and development in infrastructure in the Vasai-Virar region.

IMPERIAL LIFESTYLE was launched keeping in mind the needs of this scenario. By coming up with premium amenities, focusing on improved security amenities, providing ambient interiors and exteriors, providing Roman & Modern elevations, and doing spo at really affordable prices, IMPERIAL LIFESTYLE has revolutionized construction the Vasai-Virar region.



## MISSION

- To provides state-of-art properties and flexible property-buying solutions to customers from all walks of life

## VISION

- To lead the housing industry by delivering luxury living with affordability and provide par – excellent customer services

## VALUES

- Flexibility - Concerning customer requirement
- Transparency - In customer transaction
- Commitment - To constantly strive to improve ourselves and our product
- Team Building - Creating dedicating group of team members working towards our mission

## POLICY

- 0% Cancellation Policy\*

## PRIVILEGES

- Imperial Corporate Circle Special  
Get special discounts up-to 2 Lakh  
Pick-up and drop at your convenience  
Assured Gifts up-to 50,000



**BUILDING  
DREAMS  
SINCE 1999**



**PIONEER  
REALTORS IN  
VASAI - BOISAR**



**HOMES  
STARTING FROM  
10 LAKHS - 2 CRORE +**



**UNDER  
CONSTRUCTION  
5 MILLION + SQ.FT.**



**5000 + HAPPY  
CUSTOMERS**



**SUCCESSFULLY  
CONSTRUCTED  
3.5 MILLION SQ.FT.**





RERA NO: P99000046574

**SITE ADDRESS:**

Lodha Park, Station Road, Nalasopara (W) - 401 107.

**CORPORATE OFFICE:**

1st Floor, Shivshruti Complex, Opp. Dubey Medical College,  
Nallasopara (E) - 401 209.

**FOR SALE ENQUIRY CALL:**

**9699552200      8698340022**

[info@imperiallifestyle.in](mailto:info@imperiallifestyle.in)

[www.imperiallifestyle.in](http://www.imperiallifestyle.in)

|  |   |  |  |  |  |
|--|---|--|--|--|--|
| <b>Licensed Architect</b><br>Shree Consultants,<br>Vasai | <b>Architectural Design</b><br>Priyanka Arjun & Associates,<br>Udaipur   London | <b>Legal Advisor</b><br>Adv. Anish Kelvart,<br>Vasai | <b>R.C.C Consultant</b><br>Ira Structural Consultants,<br>Mumbai | <b>M.E.P Consultant</b><br>WiseTech M.E.P Consultants Pvt. Ltd.,<br>Mumbai | <b>Licensed Architect</b><br>One Source Consultants,<br>Vasai. |
|--|---|--|--|--|--|

**IMPERIAL PARAMOUNT**

Please Issue Cheques in Favour of "SHIVGANGA  
CONSTRUCTION AND REDEVELOPERS"

Follow us on:     

